

I.o.T. Internet of Things to 4.0

THE FUTURE

Connecting your people and machinery has never been as important as it is now.



I.o.T. Internet of Things to 4.0



- The **Internet of Things (IoT)** is the network of physical devices, vehicles, home appliances and other items embedded with electronics, software, sensors, actuators, and connectivity which enables these objects to connect and exchange data.
- Each “thing” is uniquely identifiable but is able to inter-operate within the existing Internet infrastructure.
- The IoT allows objects to be sensed or controlled remotely across existing network infrastructure

I.o.T. Internet of Things to 4.0



- The figure of online capable devices increased 31% from 2016 to **8.4 billion** in 2017.
- Experts estimate that the IoT will consist of about **30 billion** objects by 2020.
- It is also estimated that the global market value of IoT will reach **\$7.1 trillion** by 2020



I.o.T. Internet of Things to 4.0

- The term "Industrie 4.0" originates from a project in the high-tech strategy of the German government, which promotes the computerization of manufacturing.
- 4.0 is commonly referred to as the “fourth industrial revolution”.

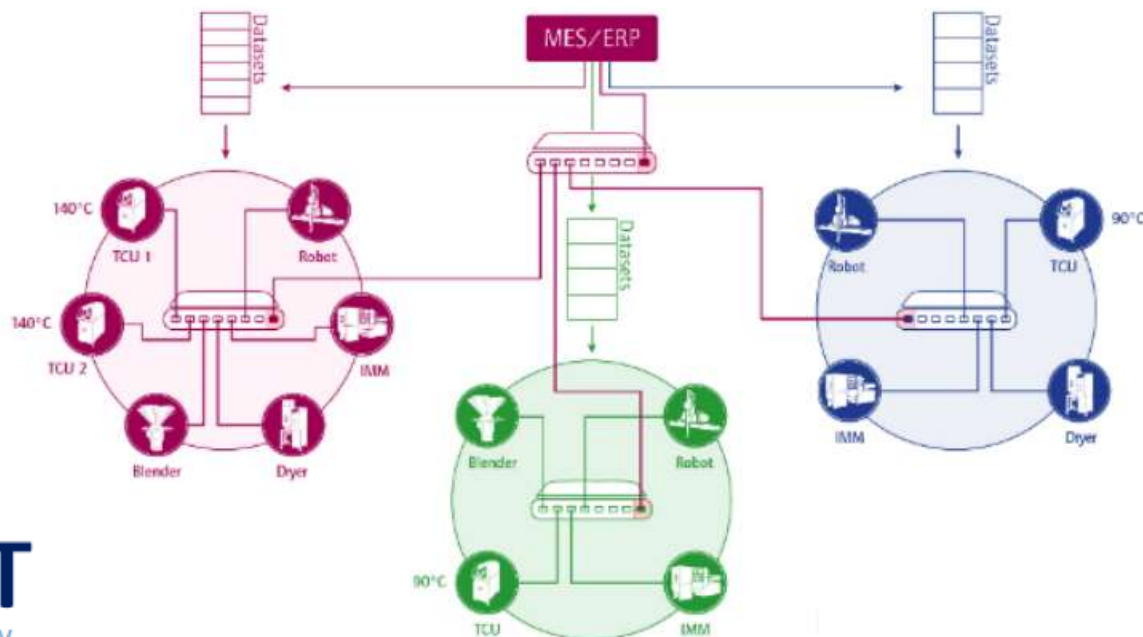


M2M
IoT

I.o.T. Internet of Things to 4.0

Most systems:

- Standard Wi-Fi Router – to machine (another Router with 6 ports)
WIRED
- Bluetooth/cable to each wired sensor on machine
- Range 20m wireless

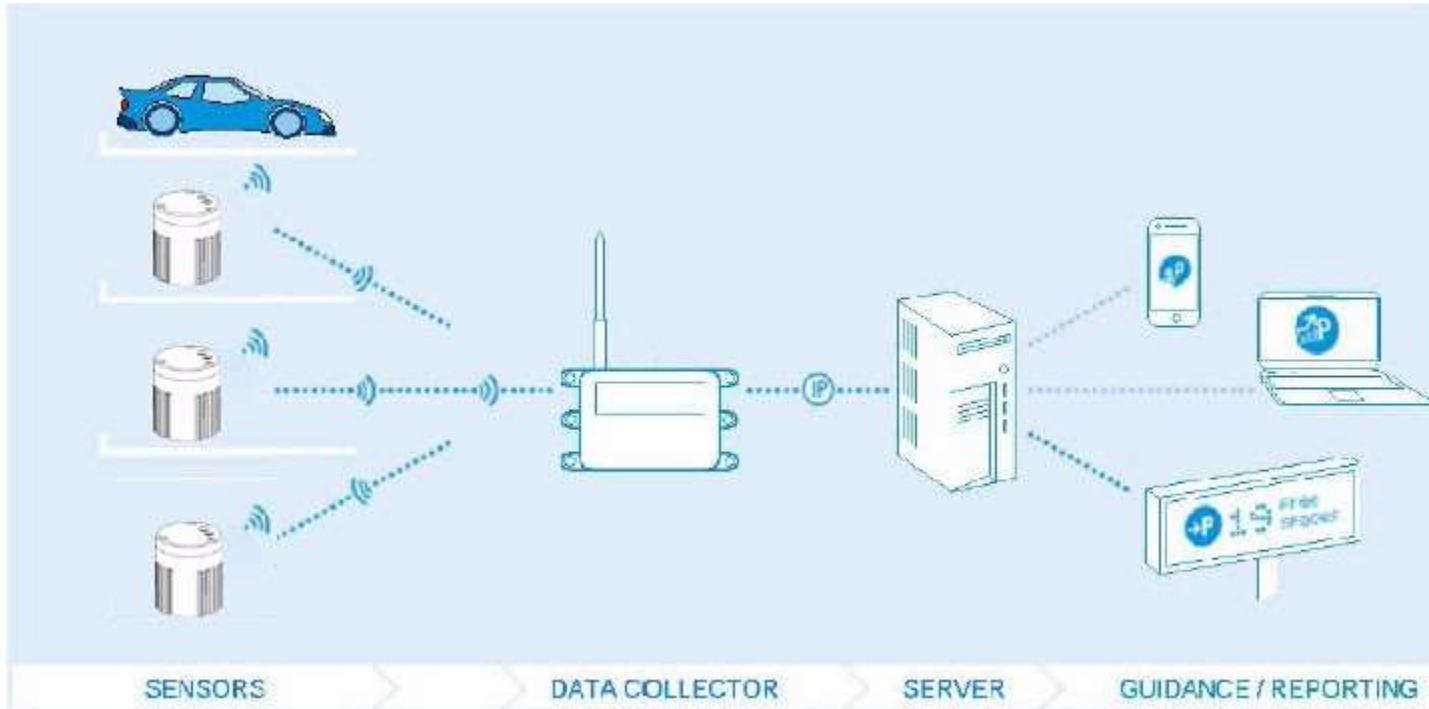


I.o.T. Internet of Things to 4.0

- Powered by “Thingybob Technologies”
- One Router
- 2 miles Range
- 2000 ports
- No additional routers
- Fully Wireless
- Minimal installation



I.o.T. Internet of Things to 4.0



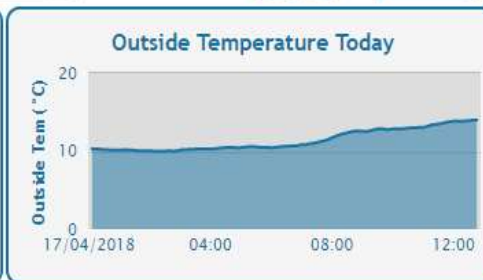
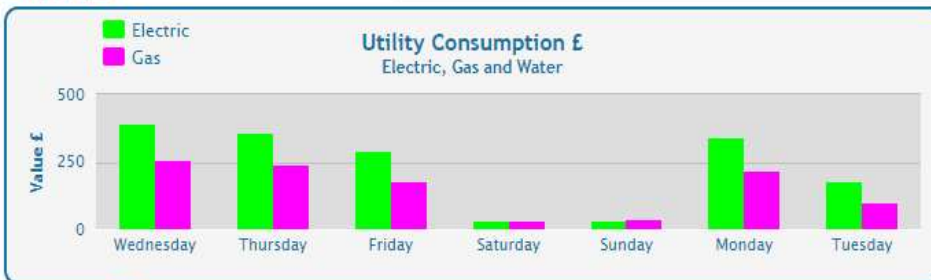
- **RF Transmitters** connect to sensors or meters and send data to the Gateway
- **Gateway** stores and transfers data to Online web server over a secure, mobile cellular connection.
- **Platform** provides a portal of visualisation dashboards

Summit Systems - WHS - Sutton Coldfield

Summit Systems - WHS - Sutton Coldfield

WHS

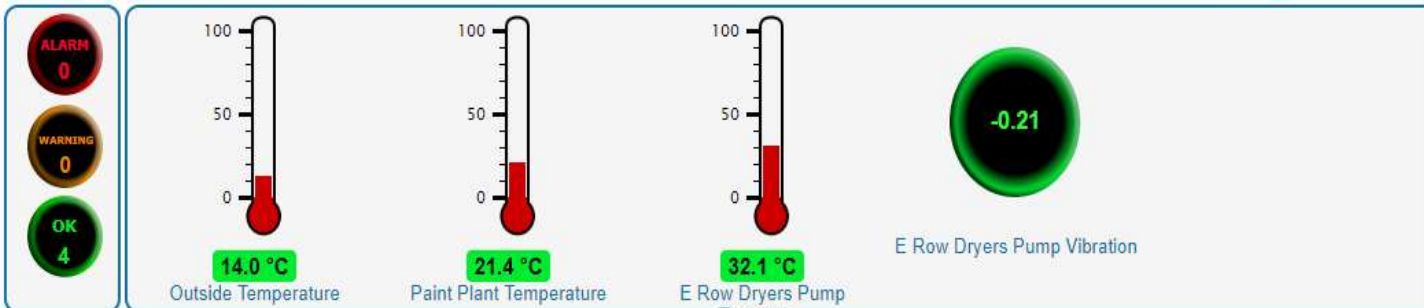
PROFILE



METERING



CONDITIONS



Approx How Much?

- Gateway + Network Server £1500
- Sensor interface £90 each
- Sensor example:
- Temperature £180 upwards depending on complexity.

